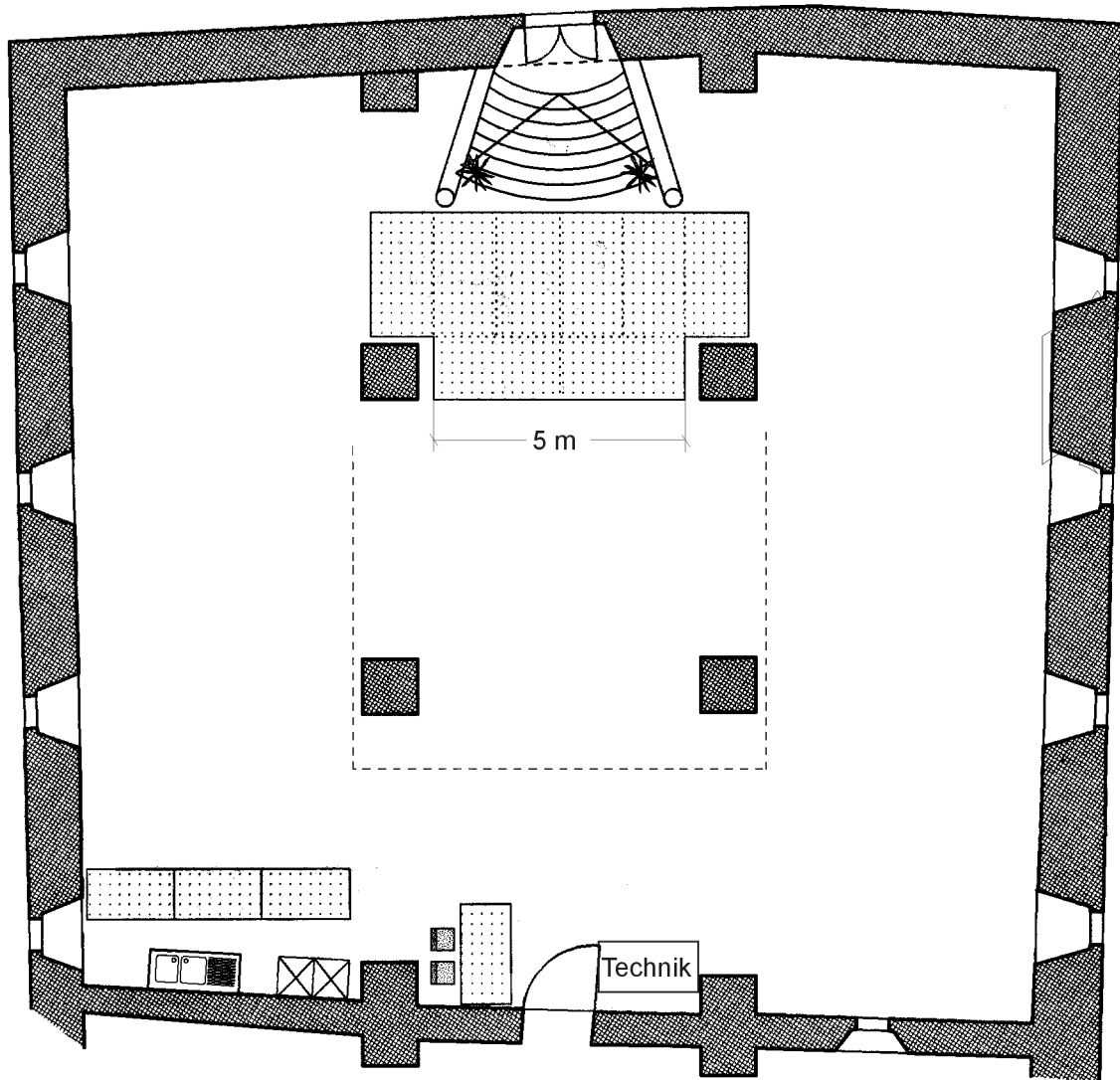


# jazz

CLUB REGENSBURG

Jazzclub Regensburg e.V.  
Bertoldstr. 9 • 93047 Regensburg  
Tel.: +49 941 563375  
technik@jazzclub-regensburg.de



# Technical Rider Leerer Beutel

## FOH:

Mischpult Midas M 32 & DL 32  
Verstärker Dynacord IPX10:8 für FOH  
CL 1600 & 2x CL 2000 für Monitoring  
CL 1600 Nearfield  
Lautsprecher 2x sub 18  
2x vl 152 (geflogen)  
2x d 15-3 (Sidefills geflogen)  
Monitore 6x DYNACORD M 12

## Backline:

Piano YAMAHA - Flügel C3 auf 442 Hz gestimmt  
YAMAHA - drum - set 18" bass drum Bass-Drum-Pedal  
22" bass drum  
TAMA Bass-Drum-Pedal  
Snare (14"x8") & Snarestand  
3 Tom (10" / 12" / 13")  
14" Floor-Tom  
16" Floor-Tom  
1 HiHat Stand TAMA Iron Cobra HH605  
4 Cymbalstands TAMA Cymbal Stand HC83BW  
1 drum seat  
1 carpet  
KEINE BECKEN!

Gitarrenverstärker: Fender '65 Twin Reverb  
Baßverstärker: Glockenklang Blue Soul & Quattro 4x10" Box

**Bühne** zwischen den Säulen 5m breit  
hinter den Säulen 7,50 m breit  
Bühnentiefe 3,70 m  
Bühnenhöhe 0,40 m  
2 Bühnenelemente á 0,5 m x 1 m als RISER  
4 Bühnenelemente á 2 x 1 m als RISER

**Mikrofone** 2x ELECTRO VOICE RE 20  
3x ELECTRO VOICE RE 200  
2x ELECTRO VOICE ND 66  
4x ELECTRO VOICE RE 510  
1x ELECTRO VOICE ND 868 Bass Drum  
3x ELECTRO VOICE ND 468 Snare/Toms  
1x SHURE Beta 91A  
3x SHURE SM 58  
7x SHURE SM 57  
2x Sennheiser E 945  
1x CAD E100  
2x Neumann KM 184  
2x AKG C1000  
5 DI – Boxen  
2 BSS AR-133

**Mikrofonstative:** 10 große Stative mit Teleskopgalgen  
10 kleine Stative mit Teleskopgalgen

**Licht:** Licon FX  
Bühnenlicht vorne: 6x Showtec Performer 1000 LED MKII  
Bühnenlicht hinten: 7x Cameo Thunder Wash 600 RGBW

# Technical Rider Leerer Beutel:

<b>FOH:</b>	
mixing console	Midas M 32 & DL 32
amplifier for FOH	Dynacord IPX10:8 amplifier for FOH CL 1600 & 2x CL 2000 for monitoring CL 1600 nearfield
<b>Speakers</b>	2x sub 18 2x vl 152 (flown) 2x d 15-3 (sidefills flown)
<b>Monitors</b>	6x DYNACORD M 12
<b>Backline:</b>	
Piano	YAMAHA - grand piano C3 tuned to 442 Hz
YAMAHA - drum - set	18" bass drum bass drum pedal 22" bass drum TAMA Bass drum pedal Snare (14 "x8") & Snarestand 3 tom (10" / 12" / 13") 14" floor tom 16" floor tom 1 hihat stand TAMA Iron Cobra HH605 4 cymbal stands TAMA Cymbal Stand HC83BW 1 drum seat 1 carpet NO CYMBALS!
Guitar amp:	Fender '65 Twin Reverb
Bass amplifier:	Glockenklang Blue Soul & Quattro 4x10" cabinet
<b>Stage</b>	between the columns 5m wide behind the columns 7.50 m wide Stage depth 3.70 m Stage height 0.40 m 2 stage elements á 0.5 m x 1 m as RISER 4 stage elements á 2 x 1 m as RISER
<b>Microphones</b>	2x ELECTRO VOICE RE 20 3x ELECTRO VOICE RE 200 2x ELECTRO VOICE ND 66 4x ELECTRO VOICE RE 510 1x ELECTRO VOICE ND 868 Bass Drum 3x ELECTRO VOICE ND 468 Snare/Toms 1x SHURE Beta 91A 3x SHURE SM 58 7x SHURE SM 57 2x Sennheiser E 945 1x CAD E100 2x Neumann KM 184 2x AKG C1000 5 DI - Box 2 BSS AR-133
<b>Microphone stands:</b>	10 large stands with telescopic boom 10 small stands with telescopic boom
<b>Lighting:</b>	Licon FX Stage lighting front: 6x Showtec Performer 1000 LED MKII Stage lighting rear: 7x Cameo Thunder Wash 600 RGBW